

NOTE: SEE SHEET NO. 1 FOR GENERAL NOTES

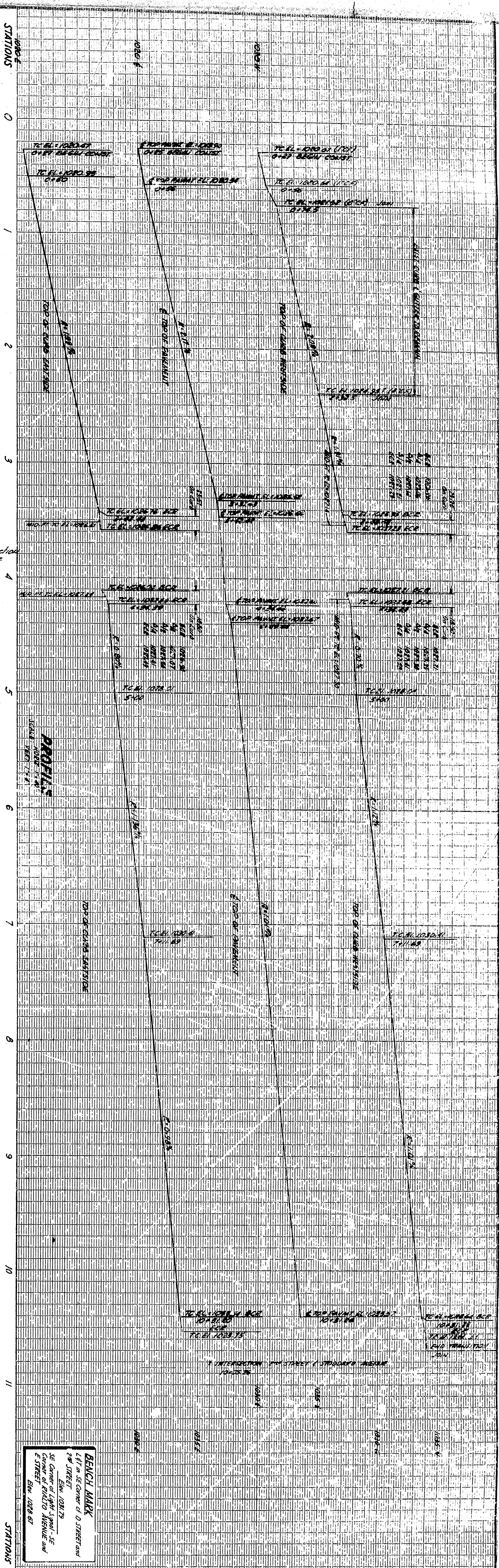
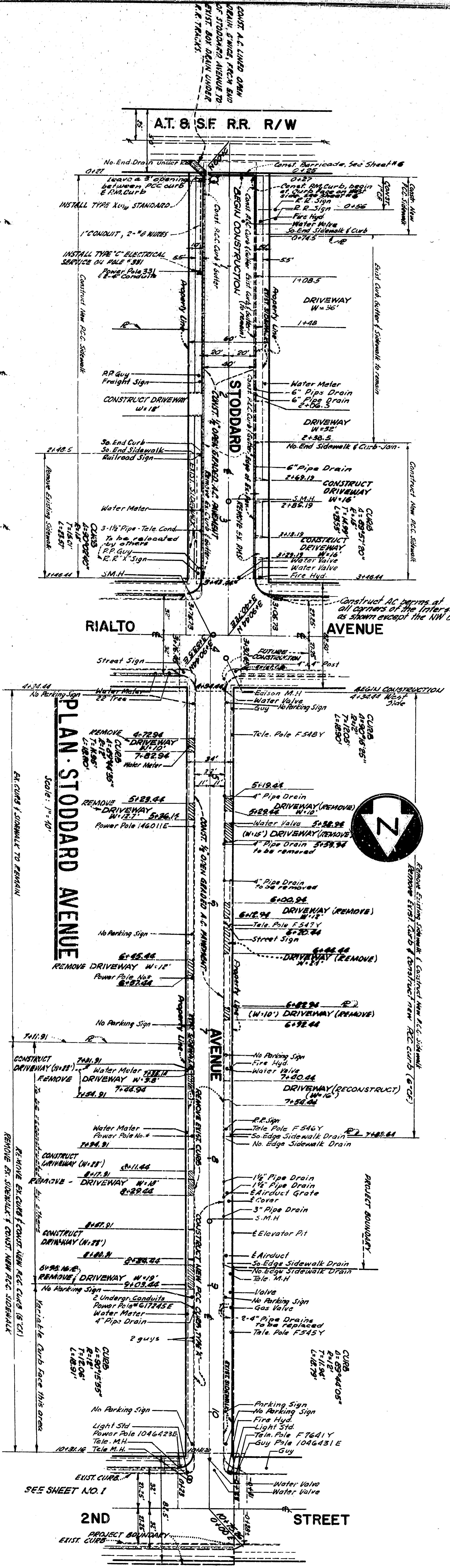
STODDARD AVENUE (AT & S.F. RR. TO 2ND ST.)

DATE: 10/22/52

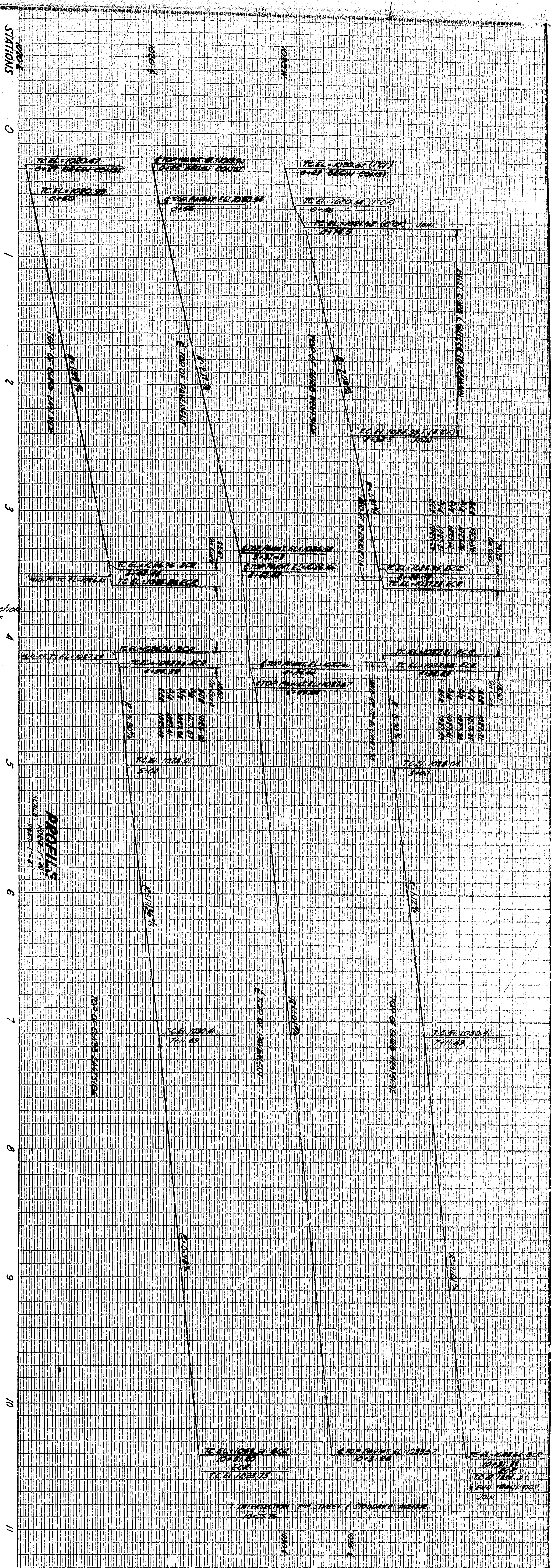
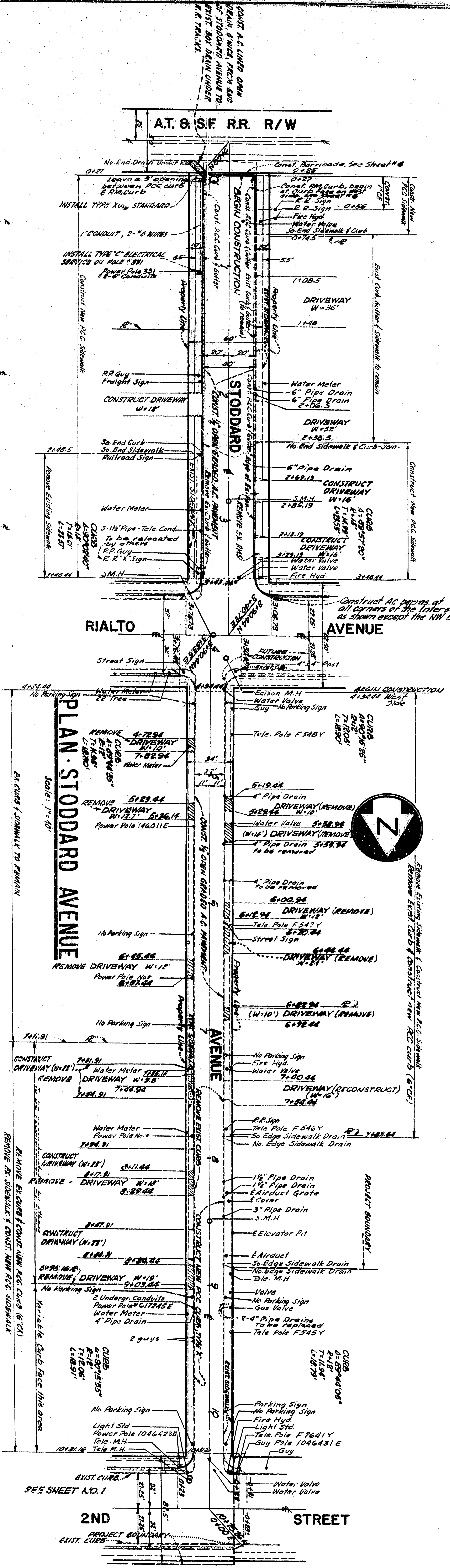
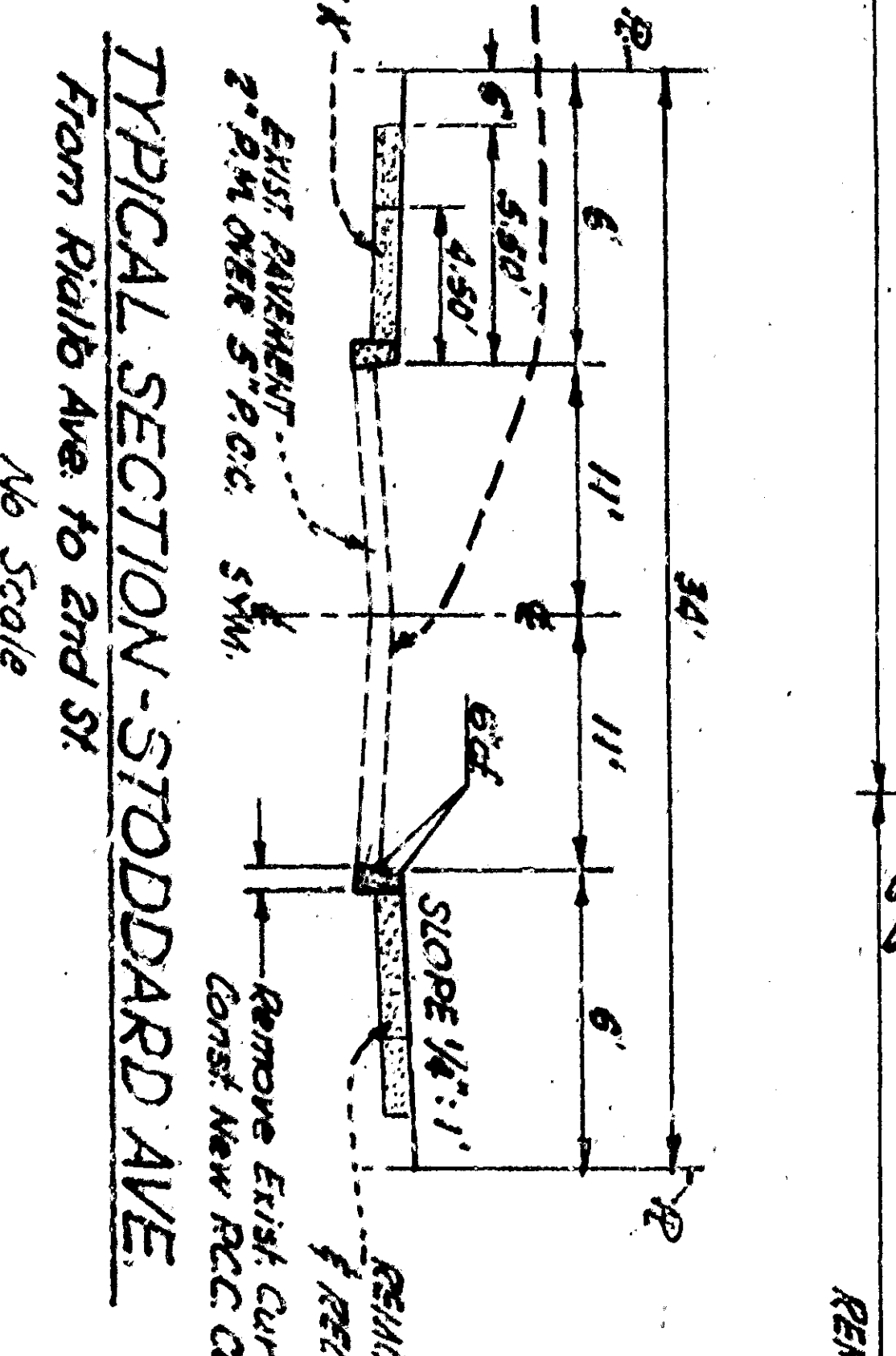
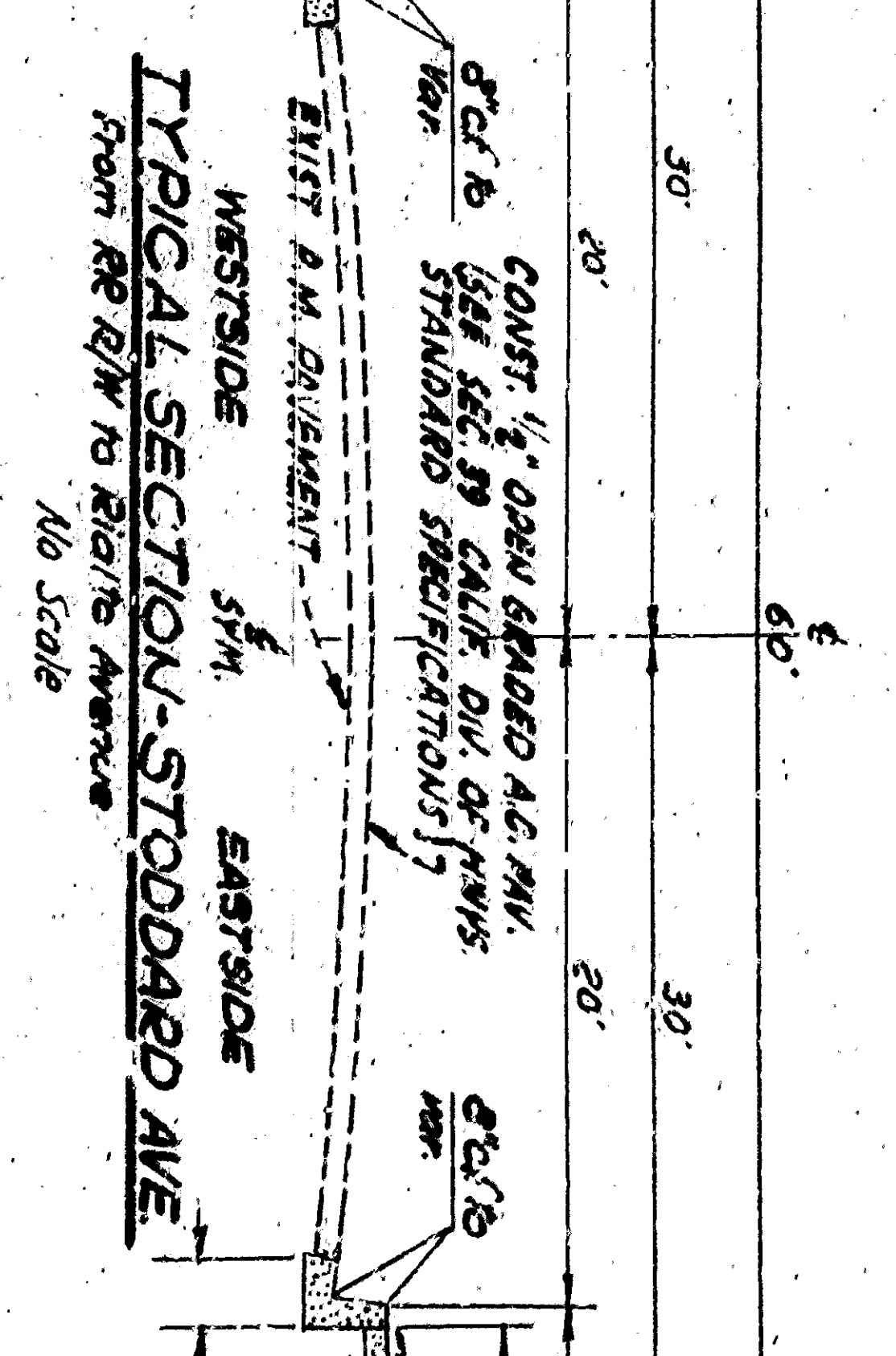
BY: J.C. Walker

CHECKED: J.P. [unclear]

SCALE: 1" = 10'



BENCH MARK
 4.71' IN DE CENTER OF D STREET
 7.8' JERSEY
 10.8175
 55' CORNER OF LIGHT SIGNAL - 55'
 55' CORNER OF RIALTO AVENUE AND
 5' STREET SW. 1029.87



NOTE: SEE SHEET NO. 1 FOR GENERAL NOTES

STODDARD AVENUE (AT & S.F. RW TO 2ND ST.)

2972

BENCH MARK
 1.71 m above center of D STREET
 1.71 m above center of D STREET
 55' corner of LIGHT RAIL - 55'
 55' corner of RIALTO AVENUE - 55'
 57' STATION - 1029.87